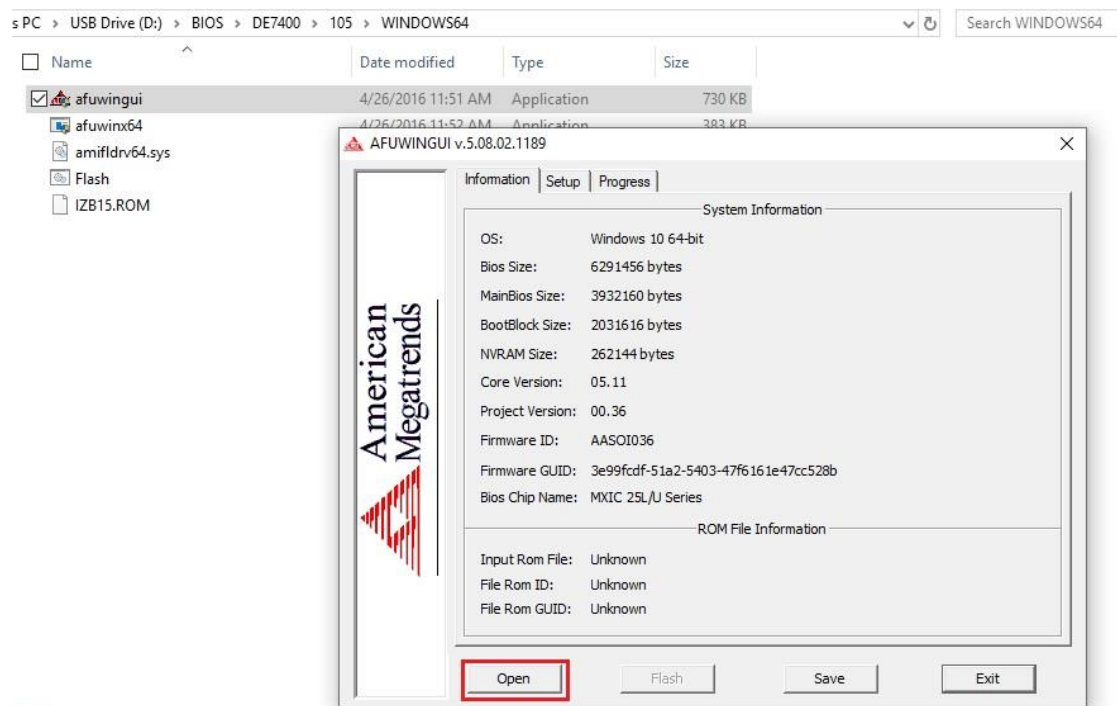


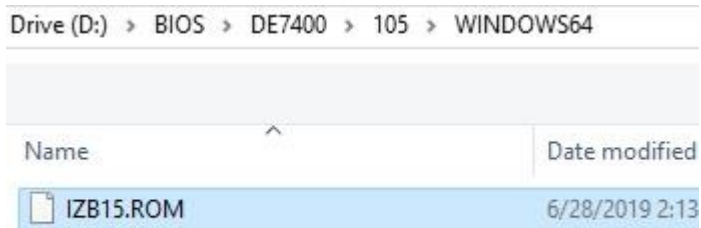
# Flash BIOS program in Windows.

## A. Flash BIOS by AFUWINGUI

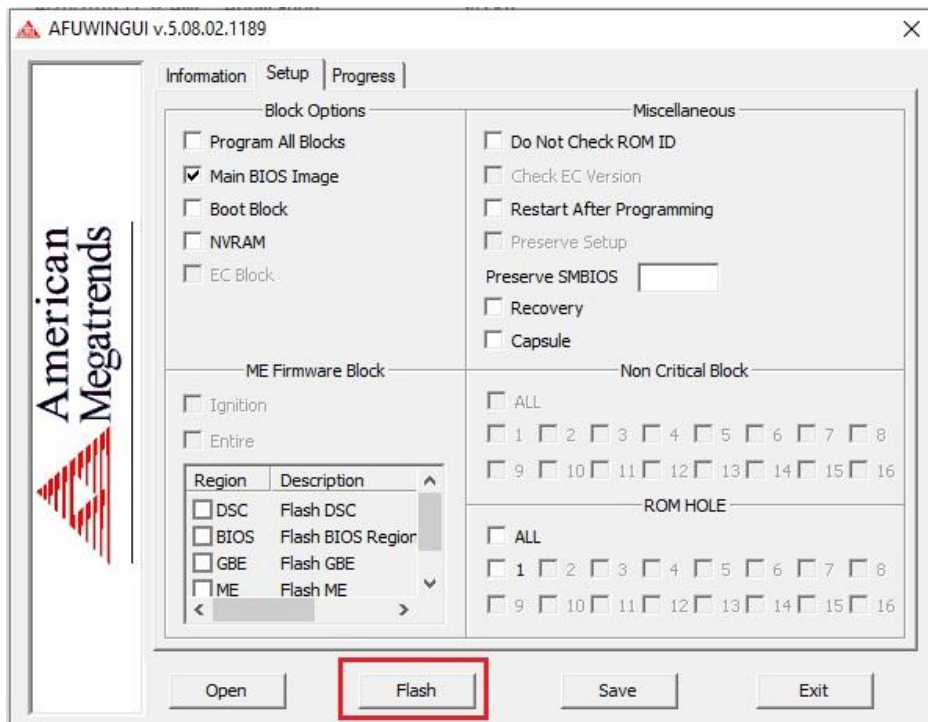
1. Please confirm Windows installed in DE7400.
2. Copy folder IZB15\_BIOS\_ROM\_WINDOWS64 to your PC.
3. Check file afuwingui.exe.
4. Check “open”.



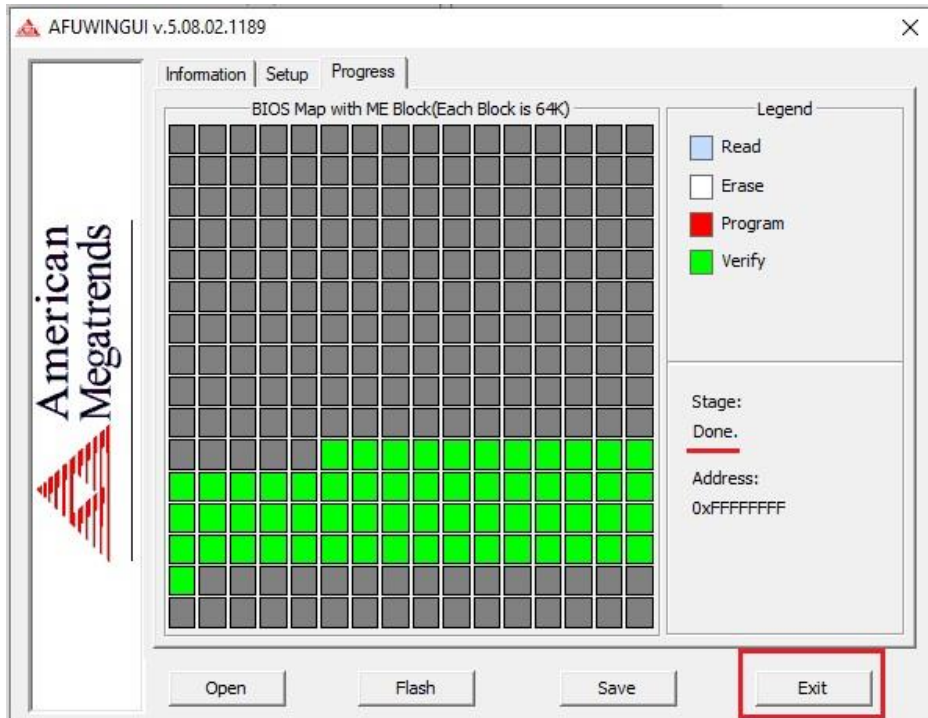
5. Select IZB15.ROM (e.g.)



6. Check “Flash”, program will go flash process.

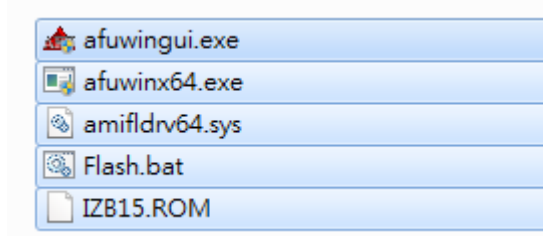


7. Check "Exit" when it Done.
8. Restart your system.
9. Finish.

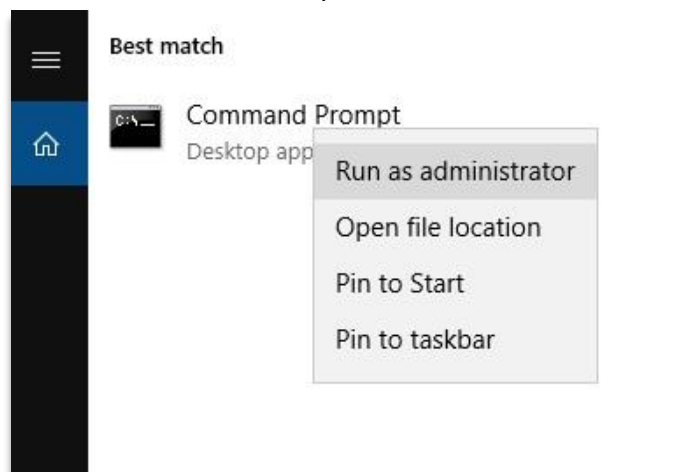


## B. Flash BIOS by Command Prompt.

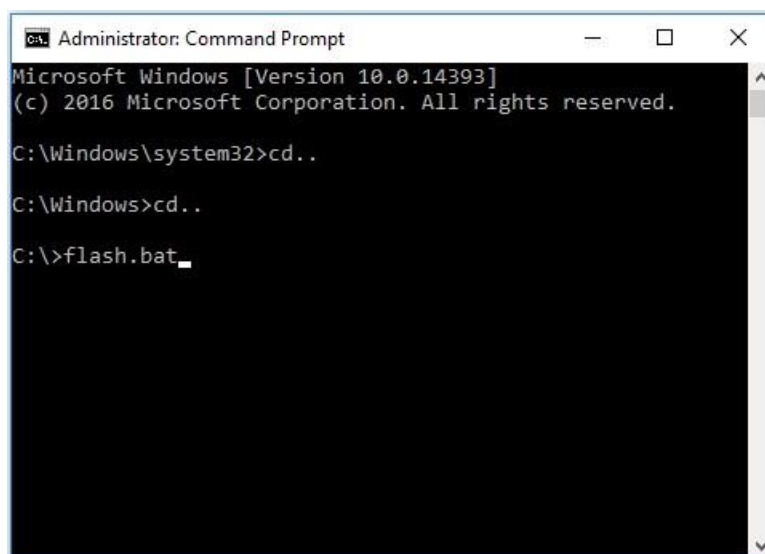
1. Please confirm Windows installed in DE7400.
2. Copy files of BIOS\_ROM\_WINDOWS64 to your PC. (Recommend copy to C: drive)



3. Run Command Prompt as administrator



4. Direct to C:\> and input "flash.bat"



5. Program will auto execute BIOS flash, and will auto reboot until BIOS flash finish.

```
-----+
          AMI Firmware Update Utility  v5.10.00.1615
                    APL Normal Mode
          Copyright (C)2018 American Megatrends Inc. All Rights Reserved.
-----+
Reading flash ..... done
Secure Flash enabled, recalculate ROM size with signature... Enable.
- FFS checksums ..... ok
Loading capsule to secure memory buffer ... done
Erasing Main Block ..... 0x0087A000 (56%)
```

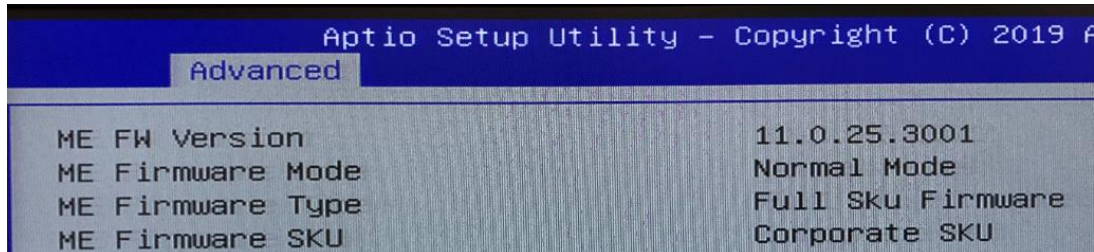
6. Finish

# Update ME program in Windows.

(Please confirm you've updated BIOS to R1.04 or R1.05 in advance)

1. Please first check ME FW version in BIOS can be recognized.

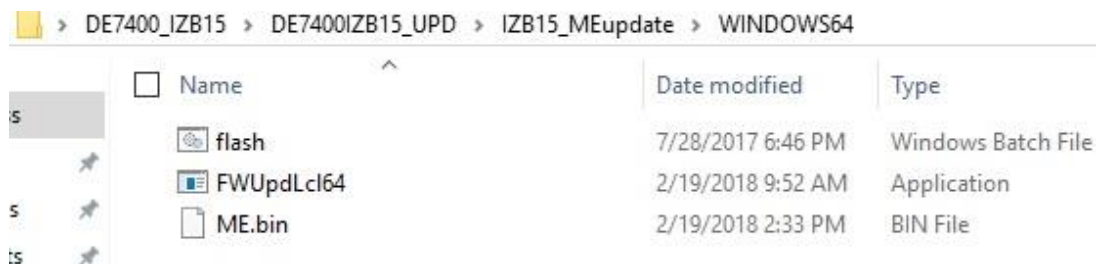
BIOS Menu : Advance > PCH-FW Configuration



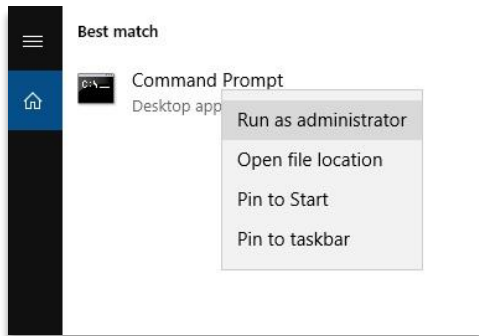
**Note :** If ME version not be recognized it appear as 00.0.00.0000, please double check Jumper(JP1) on main board is on correct 1-2 position.



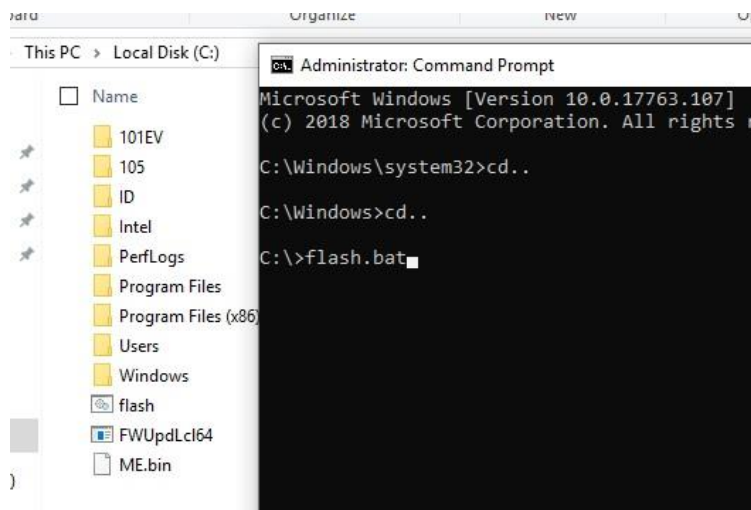
2. Copy files of IZB15\_MEupdate\_WINDOWS64 to your PC, recommend copy to C: drive.



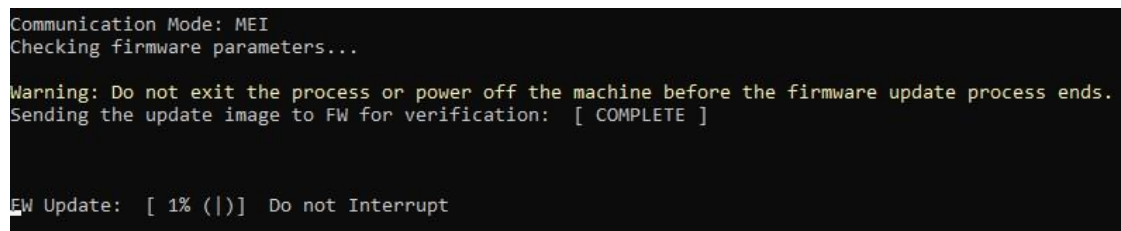
### 3. Run Command Prompt as administrator



### 4. Direct to C:\> and input "flash.bat"



### 5. The program will auto running ME data update.



### 6. When it update 100% complete please restart your PC.

### 7. Go BIOS Menu and check ME FW version.

